

WHAT ARE MY OPTIONS?

BUILD VS. SUBSCRIBE

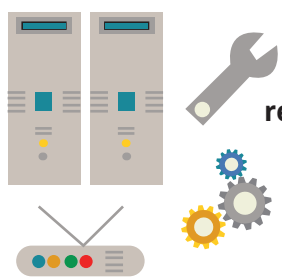


high risk
requires more IT resources
time consuming
high development costs
requires long term internal maintenance commitment

low risk
little to no IT support needed
fixed monthly price
lower total cost of ownership
maintenance and support provided



LICENSED VS. CLOUD



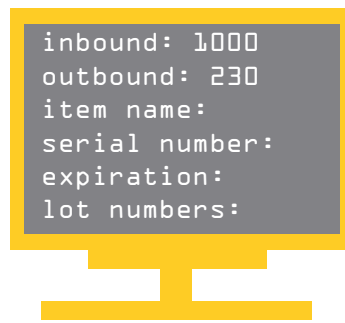
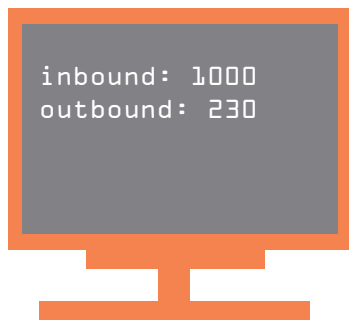
costly
much more effort required to support
lengthy to implement
requires hardware, database, software, security
requires you to maintain a robust security model

more efficient
support included
easy to set up
no software or hardware to buy, security provided



INVENTORY CONTROL VS. INVENTORY TRACKING

Allows you to see what items are coming in and going out.



Gives you more than just what's going in and out. Access to lot numbers, serial numbers, expiration dates, etc.

MANUAL ENTRY VS. BAR-CODE SCANNING



Beneficial if you only have a few items.

Beneficial if you're dealing with many items and need access to insightful information. Avoid transcription mistakes and other errors.



WEDGE, DATA CAPTURE, WIFI



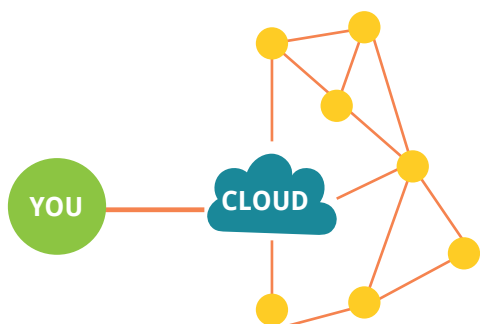
If you decide to use bar-code scanning, you can capture information on a wedge but you'll be tethered to your computer. If you select a data capture device, you can scan anywhere, but you still need to upload the data via a computer, but if you go wifi, you can scan anywhere in real-time.

AUTOMATIC REPLAN vs NO REPLAN



Based upon your parameters, the system will calculate if you need more inventory, send you alerts, send out PO's to your supplier, saving you time and money.

ADAPTERS and API's



If you need to push or pull information from other systems, APIs can save you a lot of time and money. Why re-key data you already have?